



# AUTOMATION & CONTROLS

## EXPERTISE

Basic Systems Automation specializes in the oil and gas industry. From simple machine to complete turnkey automation, Basic Systems provides dependable and reliable automation solutions.

Engine control and station control have been the main focus of the Automation Group from its inception. From panel fabrication all the way through start-up and commission, Basic Systems engineers/technicians have the experience to produce control systems that are user-friendly and reliable to meet the Client's operating requirements.

Keeping with our Client's infrastructure, our engineers/technicians work with many of the control system products available to date.

## SYSTEMS SPECIFICATIONS

Basic Systems Automation Group has the process understanding to provide our Clients with a detailed control system document as well as hardware and network specifications. Through our expertise and guidance, these documents assist our Clients in creating their own in-house standards of a control system infrastructure consistency.

## TRAINING

The job is not complete until the training is done. Our Automation Group provides the materials needed in training on site personnel on the control system implemented. From on the job teaching to class room size training of the process, controls and hardware.

## COMMISSIONING

Commissioning is just part of the work required in assuring the control systems will work time and time again and assist in a successful start-up. Our commissioning documentation includes:

- Site acceptance Process functional control document
- Device Calibration sheets
- HMI, Panel hardware and field device interface function document
- Alarm and Shutdown list (including setpoints)

# COMPRESSOR UNIT CONTROL PANELS

## Drivers:

### Reciprocating Engine

Caterpillar, Waukesha, Cooper, Superior, Dresser-Rand

### Motor

Siemens, Toshiba

## Compressors:

Ariel, Cooper, Dresser-Rand, Gemini

## Capacity Control:

ACI Services, eRCM Express Solution Provider



**AUTOMATION CAPABILITIES**

**BASIC SYSTEMS, INC.**



# STATION PROCESS CONTROL



## Process Control Panels:

- Station Control
- Emergency Shutdown Systems
- Measurement and RTU Systems
- Dehy Controls
- Generator Control
- Well Pad Control
- H<sub>2</sub>S System Controls
- Thermal Oxidizers
- Recycle Flow Control Systems
- Pipeline Main Line Valves
- Remote IO
- Truck Loading

**AUTOMATION CAPABILITIES**

**BASIC SYSTEMS, INC.**

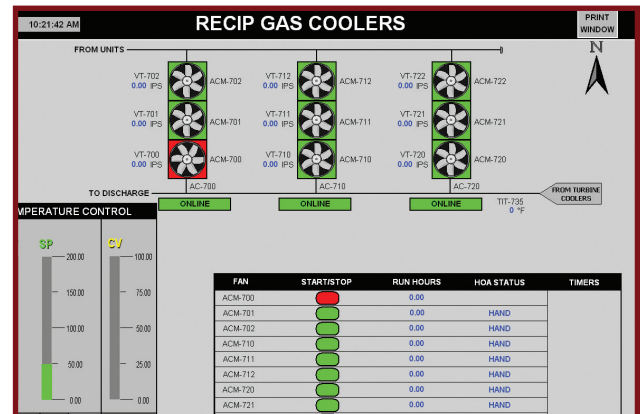
# AUTOMATION SERVICES

## Design:

Control Panels  
Control System Narrative  
Cause and Effect Chart  
System Architecture  
Network Topology

## Programming & HMI Development:

Allen Bradley / Rockwell PLC / HMI  
Siemen PLC / HMI  
Schneider PLC / HMI  
Wonderware Certified  
Citect  
Emerson DeltaV  
Emerson ROC  
ABB Totalflow  
Control System Upgrades/Migrations



## On-Site Service:

Start-up and Commissioning  
Training  
Consulting



**AUTOMATION CAPABILITIES**

**BASIC SYSTEMS, INC.**